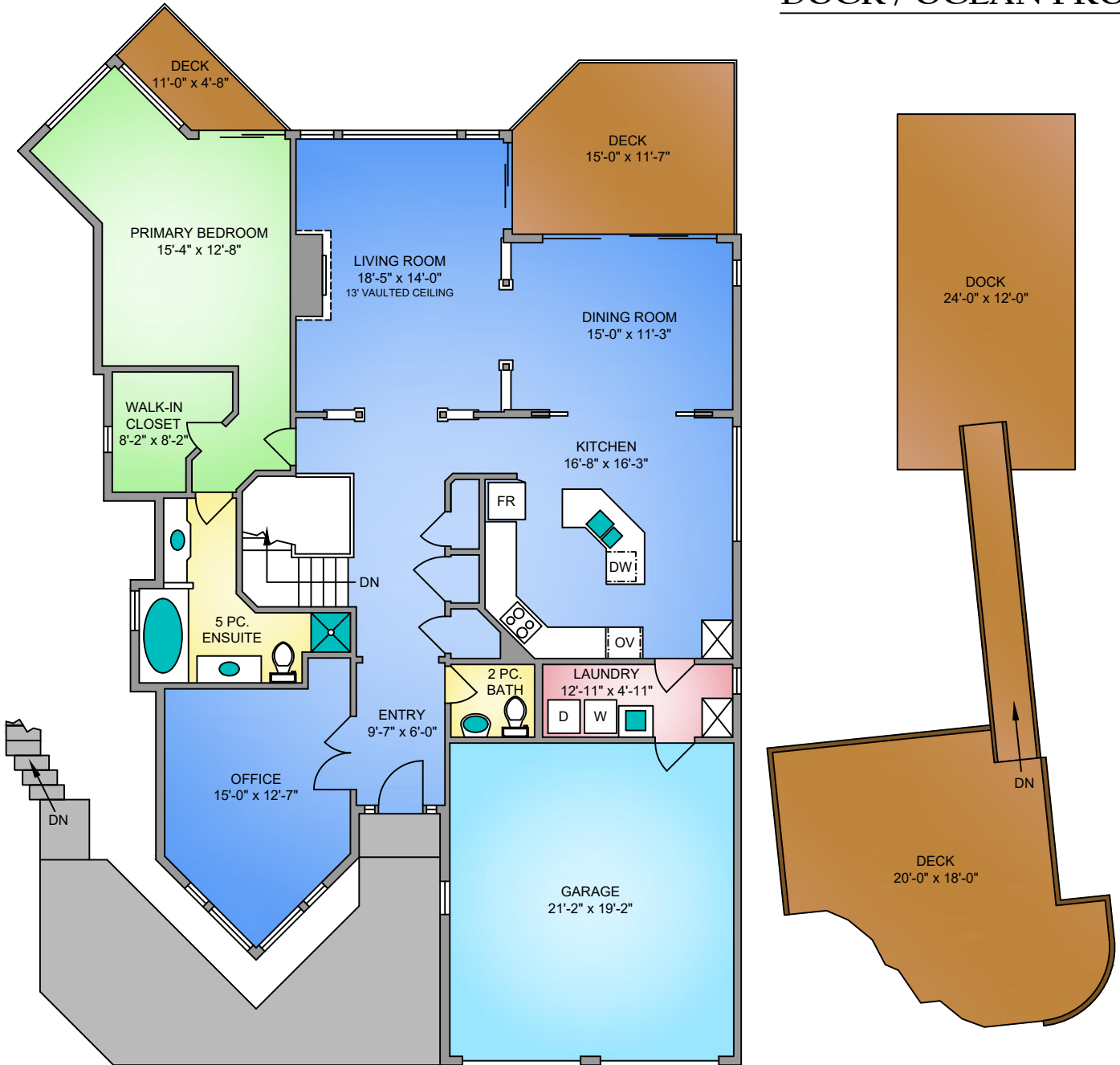


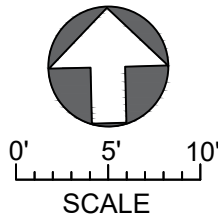
**THIRD FLOOR**  
**1871 SQ. FT.**  
**9' CEILING HEIGHT**

**DOCK / OCEAN FRONT**



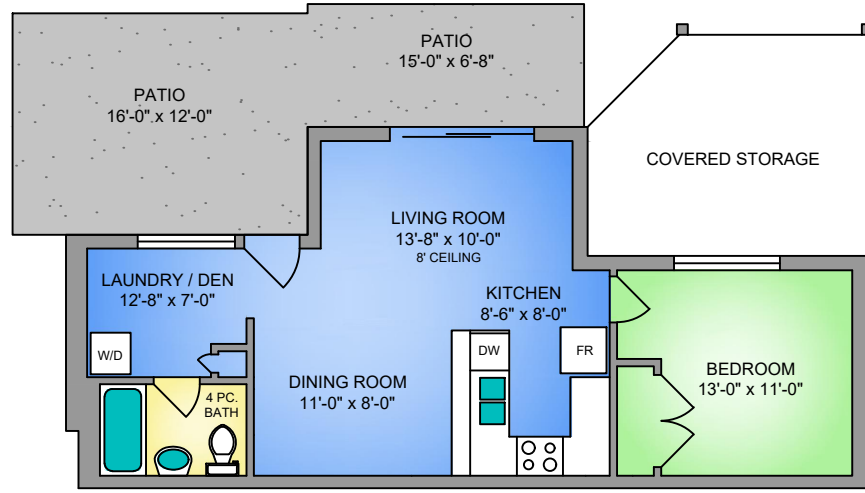
250-884-9753  
 matt@propermeasure.com  
 www.propermeasure.com

**NORTH**

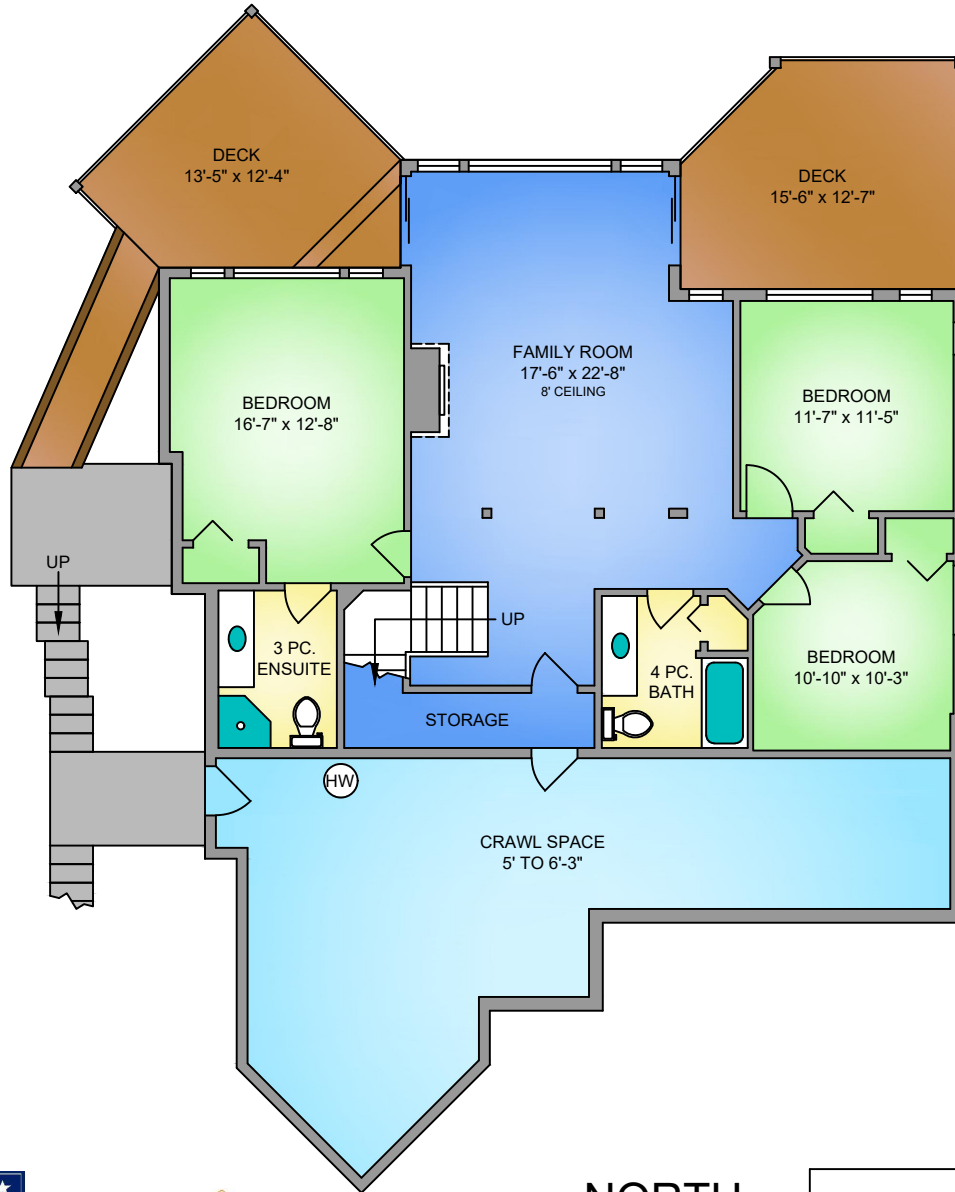


740 SEA DRIVE AUGUST 24, 2022			
PREPARED FOR THE EXCLUSIVE USE OF MARILYN BALL PLANS UPDATED USING CONSTRUCTION DRAWINGS AND MAY NOT BE 100% ACCURATE, IF CRITICAL BUYER TO VERIFY.			
FLOOR	AREA (SQ. FT.)		
	FINISHED	GARAGE	DECK / PATIO
THIRD	1871	440	208
SECOND	1209	-	336
FIRST	670	-	292
<b>TOTAL</b>	<b>3750</b>	<b>440</b>	<b>836</b>

**FIRST FLOOR**  
670 SQ. FT.

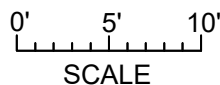


**SECOND FLOOR**  
1209 SQ. FT.



250-884-9753  
matt@propermeasure.com  
www.propermeasure.com

NORTH



740 SEA DRIVE AUGUST 24, 2022			
PREPARED FOR THE EXCLUSIVE USE OF MARILYN BALL PLANS UPDATED USING CONSTRUCTION DRAWINGS AND MAY NOT BE 100% ACCURATE, IF CRITICAL BUYER TO VERIFY.			
FLOOR	AREA (SQ. FT.)		
	FINISHED	GARAGE	DECK / PATIO
THIRD	1871	440	208
SECOND	1209	-	336
FIRST	670	-	292
<b>TOTAL</b>	<b>3750</b>	<b>440</b>	<b>836</b>