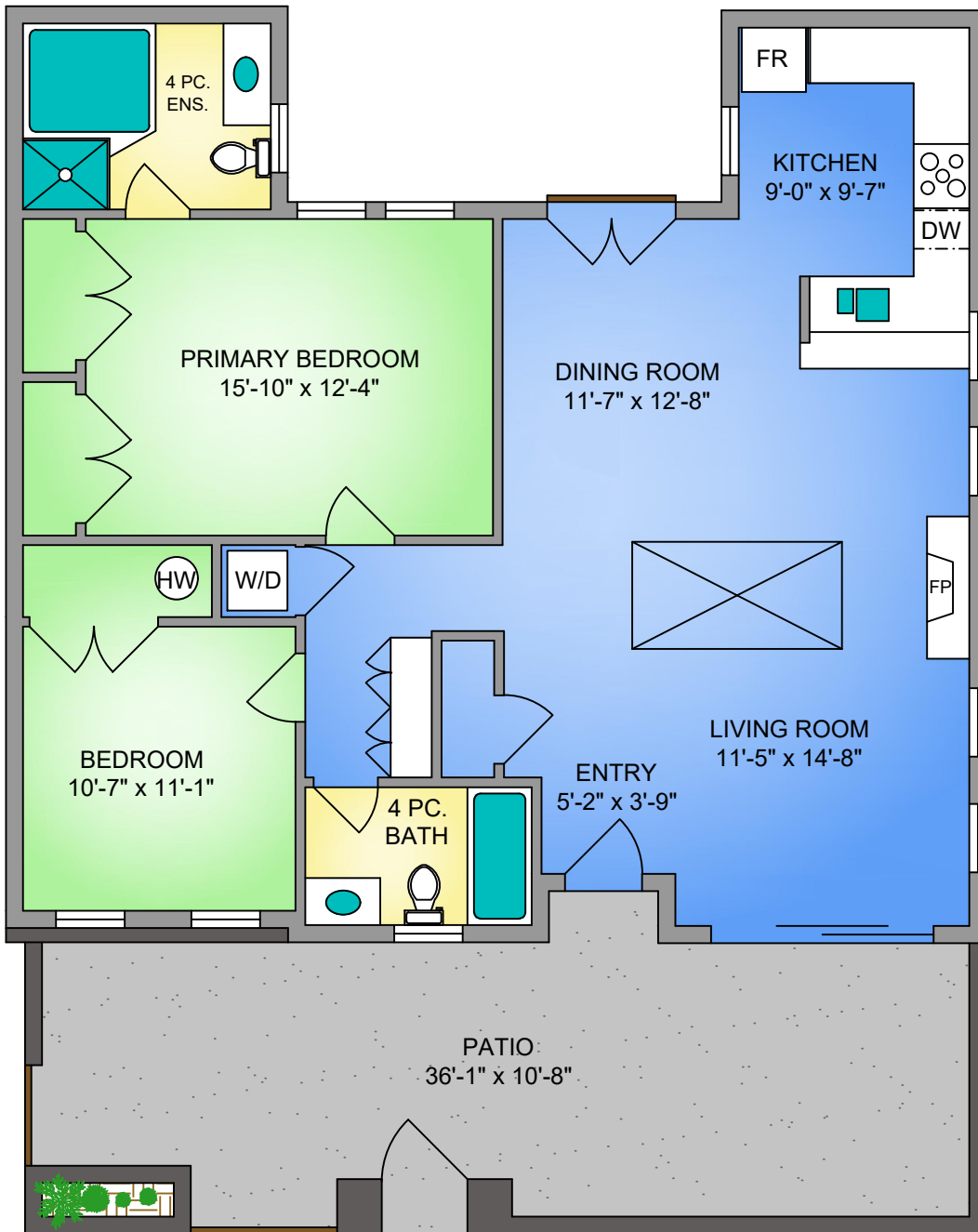


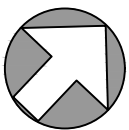
UNIT 9 - 440 PARRY STREET

1196 SQ. FT.

9'-0" CEILING HEIGHT



NORTH



SCALE

#9 - 440 PARRY STREET JUNE 28, 2022 PREPARED FOR THE EXCLUSIVE USE OF MARILYN BALL PLANS MAY NOT BE 100% ACCURATE, IF CRITICAL BUYER TO VERIFY.		
FLOOR	AREA (SQ. FT.)	
	FINISHED	PATIO
LOWER	1196	375



250-884-9753
 matt@propermeasure.com
 www.propermeasure.com

